



PROVE proudly acknowledges the Traditional Custodians and Owners of the land and water on which we rely and operate. We pay our deepest respects to their Elders past, present and emerging. We acknowledge the continued cultural, social and spiritual connections that Aboriginal and Torres Strait Islander Peoples have with the lands and waterways, and recognise and value their care and protection for thousands of generations.

Wishing you a Merry Christmas & a Happy New Year!

After a hectic year, the PROVE crew will be taking a short, well earned break over the Christmas & New Year period to refresh and spend time with our loved ones. The team will be back and ready to crack on into 2023 from Monday 9th January.

Before we go... rather than providing physical gifts, each Christmas PROVE instead makes a donation on behalf of our clients to a foundation close to our hearts. In previous years we have donated to Peter Mac, The Royal Children's Hospital and The Heart Foundation, to name a few. This year we have chosen Beyond Blue.



Founded by former Victorian Premier Jeff Kennett, Beyond Blue is one of Australia's most well known mental health and wellbeing support organisations. Providing various support programs to address issues related to depression, suicide, anxiety disorders and other related mental illnesses.

PROVE is extremely dedicated to raising awareness of mental health issues amongst our employees. We have rolled out a Mental Health & Wellbeing Policy and continually work on developing & promoting wellness activities within our workplace. We hope our donation goes a long way to help the foundation continue it's incredible work for many years to come.

WELS news:

The Federal Court of Australia orders \$2 million penalty under Water Efficiency Labelling and Standards scheme.

PROVE received correspondence from WELS this week advising of a Perth based company supplying products that were not registered, or labelled as required, by the WELS Act. With many Australians understanding the significance of conserving our most valuable resource, WELS was born to help consumers choose more water efficient products.

This judgement is the first civil penalty handed down by the Court and demonstrates how serious WELS is in its commitment to compliance.

It has never been more important to ensure you are having your products tested, certified and registered. Contact PROVE today for more information on the certification process and how we can help your company avoid a hefty penalty for non-compliance.

You can read the news item about Minister Plibersek's media release on the WELS website [here](#).

[PROVeng.com.au](#) has officially been re-launched!!

We have been working hard, with the help of our friends at Elephant in the Boardroom, to revamp the PROVE website and we're very proud of how it has turned out.

Please go check out the new and improved [PROVeng.com.au](#) and let us know what you think.

Don't forget to also follow us on [Facebook](#), [Twitter](#), [Instagram](#) and [LinkedIn](#).

Plumbing Connection Magazine:

'Switch to Lead-Free'

With 25+ years experience and reaching 20,000 subscribers, the [Plumbing Connection](#) quarterly publication is the most highly circulated independent magazine for this sector.



With the deadline for the biggest industry reform in years just around the corner, PROVE director Terry Nguyen discusses the decisions faced by manufactures and plumbing suppliers, specifically, the stainless vs plastic option.

Removing lead from plumbing products has prompted engineers to recreate products by finding clever ways of removing copper-alloy contact with internal waterways. Innovative product designs, whilst reducing lead in water, are keeping certifiers on their toes to cover other consequential effects the changes have made.

The mandatory switch to lead-free products and fittings that come into contact with drinking water is set for September 2025. With the new regulation affecting many, be sure to check out Terry's, and other industry leaders, articles in the latest issue of [Plumbing Connection](#).

Infrastructure—Thermography:

Thermal imaging is a non-invasive diagnostic technique used to identify potential hazards within electrical switchboards.

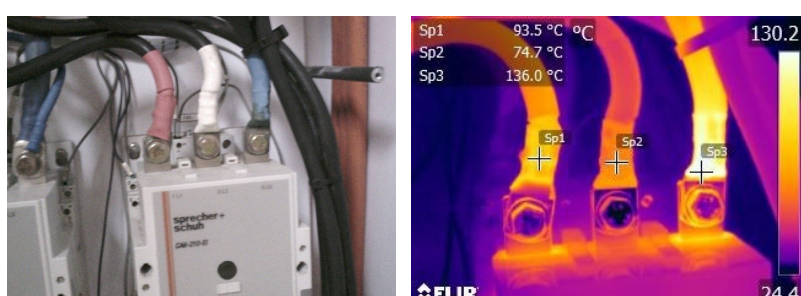
By viewing heat generated from electrical switchboards, thermal imaging provides invaluable insights into potential electrical faults such as:

- Loose connections
- Overloads
- Faulty equipment or fuses
- Damaged switches

Neglecting to perform periodic inspections can result in costly downtime for your business, disruptive power outages for your customers or affect insurance claims.

Trusted by Melbourne's largest retail water utility, Yarra Valley Water, to complete safety switchboard inspections, PROVE's Infrastructure division offers thermography imaging services.

Don't wait for your electrical systems to begin to show signs of failure! If you're due for your annual switchboard inspection, contact us today info@PROVeng.com.au.



New year, new faces:

With each division of PROVE experiencing significant growth towards the end of 2022 we have welcomed a few new faces to the family.

This includes our new Infrastructure Manager Darren Gelsi. Darren comes to us from DP World, a global provider of supply chain logistics solutions. For just shy of 7 years he held the position of Electrical Superintendent/Reliability Technician. Managing his team of 50, plus various projects, while ensuring a high level of OH&S was maintained in the fast-paced logistics environment.

With an impressive and varied range of experience in the electrical industry, including CAD drawing, design, planning, quoting, project, contract, and tender management, Darren has been employed to oversee the Infrastructure division, ensuring the team is adhering to our ISO 9001, 14001 & 45001 Certifications and helping us to continue the momentum our rapidly growing business.



PWMTL—Laboratory Tours:

In the last quarter of 2022 PROVE's Water Meter Testing Laboratory was visited by three of Melbourne's water authorities, South East Water, Greater Western Water and Yarra Valley Water.

PROVE directors Terry & Frank joined Senior Scientist Anthony in hosting information sessions, followed by a laboratory tour, with topics of conversation tailored to each authorities specialty, or concerns.

After the COVID pandemic caused 2 years of lockdowns and restrictions in Melbourne, PROVE was more than happy to welcome guests back into our lab for face-to-face catchups.

If you are interested in coming out to PROVE for a similar workshop session please reach out via info@PROVeng.com.au, alternatively feel free to contact Anthony directly.